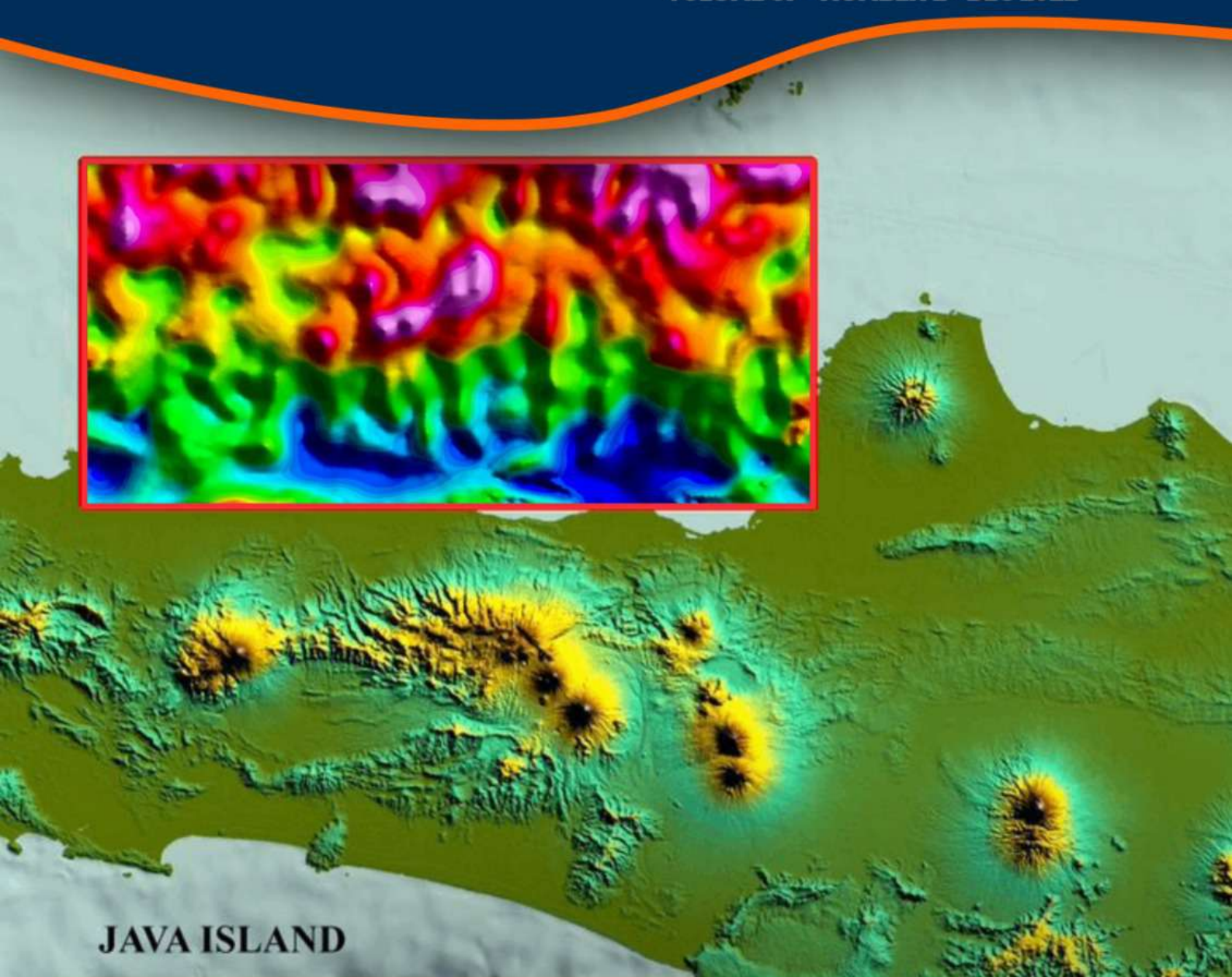
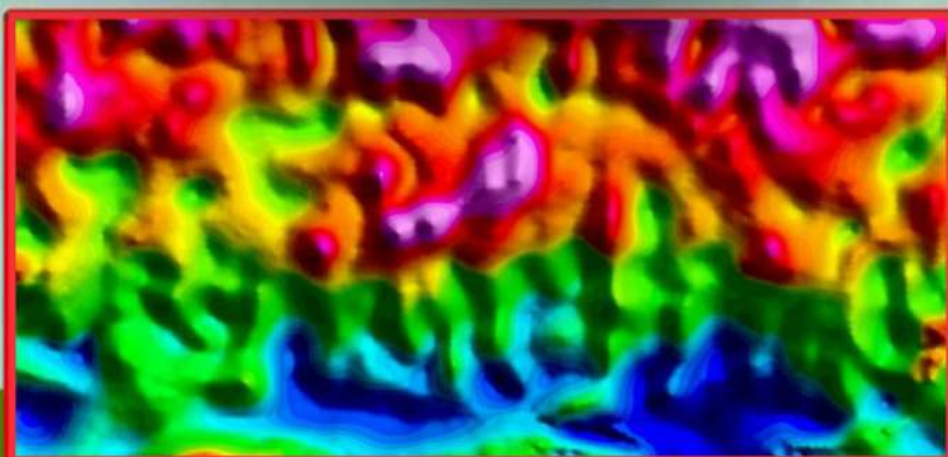


# BULLETIN OF THE MARINE GEOLOGY

VOLUME 37 • NUMBER 2 • DEC 2022



JAVA ISLAND

BoMG	VOL. 37	NO. 2	PAGE 56-119	BANDUNG, DECEMBER 2022	ISSN 1410-6175
------	---------	-------	-------------	------------------------	----------------

Accredited : RISTEK-BRIN 200/M/KPT/2020



**MARINE GEOLOGICAL INSTITUTE**  
GEOLOGICAL AGENCY  
MINISTRY OF ENERGY AND MINERAL RESOURCES

**BALAI BESAR SURVEI DAN PEMETAAN GEOLOGI KELAUTAN**  
BADAN GEOLOGI  
KEMENTERIAN ENERGI DAN SUMBER DAYA MINERAL

# BULLETIN OF THE MARINE GEOLOGY

---

Vol. 37, No. 2, December 2022

---

## INSURED EDITOR

Director of Marine Geological Institute

## CHIEF OF EDITORIAL BOARD

Dr. Luli Gustiantini, S.T., M.T.

## VICE CHIEF OF EDITORIAL BOARD

Imam Setiadi, S.Si., M.T.

## EDITORIAL BOARDS

Siti Marina, S.T., M.Phil. (*Marine Geological Institute of Indonesia*)

Yulinar Firdaus, S.Si., M.T. (*Marine Geological Institute of Indonesia*)

Nazar Nurdin, S.T., M.T. (*Marine Geological Institute of Indonesia*)

Andrian Wilyan Djaja, S.Si., M.T. (*Marine Geological Institute of Indonesia*)

Sony Mawardi, S.T. (*Marine Geological Institute of Indonesia*)

M. Andri Syahrir, S.T. (*Marine Geological Institute of Indonesia*)

Dra. Ai Yuningsih (*Marine Geological Institute of Indonesia*)

Shaska Ramadhan Zulivandama, S.T., M.T. (*Marine Geological Institute of Indonesia*)

Dr. rer. Nat. Maria Sekar P., M.Sc., S.T. (*Bandung Institute of Technology*)

Tumpal B. Nainggolan, S.T., M.T. (*National Research and Innovation Agency*)

Dr. Eng. Budi Muljana, S.T., M.T. (*Padjajaran University*)

Dr. Ir. Noor Cahyo Dwi Aryanto, M.T. (*National Research and Innovation Agency*)

## SCIENTIFIC REVIEWERS

Dr. Pi. Iis Triyulianti, M.Si. (*National Research and Innovation Agency*)

Dr. Jamal, S.T., M.T. (*Centre for Geological Survey*)

Dra. Kresna Tri Dewi, M.Sc. (*Centre for Geological Survey*)

Ir. Dida Kusnida, M.Sc. (*National Research and Innovation Agency*)

Imam Setiadi, S.Si., M.T. (*Marine Geological Institute of Indonesia*)

## PUBLISHER BOARDS

Ir. Immaculata Christiana, M.T.

Drs. Judy Muliawan Eddy

Dery Rochiman, A.Md.

Dwinanda Pratya Annisa M., S.pd.

Nanang Suryana

## GRAPHIC DESIGN

Arif Suprayitno, S.Kom., M.Kom.

For communication of this publications, please contact :

**MARINE GEOLOGICAL INSTITUTE**

Dr. Junjuran 236, Bandung-40174, Indonesia

Telephone : +62-22-6032020, 6032201, Fax : +62-22- 6017887

E-mail : [ejournal.p3gl@gmail.com](mailto:ejournal.p3gl@gmail.com)

## Preface

This is the second edition since the reorganization of our Marine Geological Institute. Geophysical survey is a leading tool in marine geology to determine subsurface conditions so that all the obstacles that hinder our sight to discover features and phenomena that occurred underwater and deep down below underwater can be eliminated. Its processing and interpretation provide a lot of material and subjects to be studied, resulting in many excellent and qualified papers.

We are glad to present the second edition of the year 2022 with five great papers to which the Marine Geological Institute contributed 3 of them. Those papers are: started from the Faculty of Fisheries and Marine Sciences, Universitas Diponegoro, with a paper titled Spatial Distribution of Chlorophyll-A and Nutrients in the Tengah Island, Karimunjawa Indonesia. Geomorphology of Small Islands and Its Seafloor Profiles in the Eastern and Western Halmahera Waters, a cooperative between Department of Marine Science, IPB University and National Research and Innovation Agency (BRIN). Distribution of Benthic Foraminifera in the Waters from off Putri Island, North of Batam, Riau Archipelago, the work from Marine Geological Institute collaborated with Geological Engineering Program Study, Faculty of Exploration and Production Technology, Universitas Pertamina. Another work of the Marine Geological Institute collaborated with Department of Geophysical Engineering, Faculty of Engineering, University of Lampung, with paper Geological Interpretation of the Offshore Sedimentary Basin of North Central Java Based on Spectral Analysis and 2D Gravity Modeling. And the last was Geological Interpretation of 2D Gravity Modeling in Tulung Selapan Area and Surroundings, South Sumatra Basin, from National Research and Innovation Agency (BRIN), which again cooperated with Marine Geological Institute. The editors appreciate the valuable contribution of the authors for this edition.

Chief Editor

## BULLETIN OF THE MARINE GEOLOGY

Vol. 37, No. 2, December 2022

## Contents

- Spatial Distribution of Chlorophyll-A And Nutrients In The Tengah Island, Karimunjawa Indonesia*  
**Rikha Widiaratih, Agus Anugroho Dwi Suryoputra, Gentur Handoyo, Eridhani Dharma Satya** ----- 56-66  
 DOI : <http://dx.doi.org/10.32693/bomg.37.2.2022.782>
- Geomorphology Of Small Islands And Its Seafloor Profiles In The Eastern And Western Halmahera Waters*  
**Abdul Motalib Angkotasan, Dietriech G Bengen, I Wayan Nurjaya, Neviaty P Zamani, Nyoman M.N Natih, Franto Novico** ----- 67-80  
 DOI : <http://dx.doi.org/10.32693/bomg.37.2.2022.774>
- Distribution Of Benthic Foraminifera In The Waters From Off Putri Island, Northern Batam, Riau Archipelago*  
**Resti Samyati Jatiningrum, Anggun Mutika, Luli Gustiantini, Nineu Yayu Gerhaneu, Godwin Latuputty, Agustina Rosi Divina** ----- 81-95  
 DOI : <http://dx.doi.org/10.32693/bomg.37.2.2022.783>
- Geological Interpretation Of The Offshore Sedimentary Basin Of North Central Java Based On Spectral Analysis And 2d Gravity Modeling*  
**Restu Ningsih, Imam Setiadi, Riza Rahardiawan, Ordas Dewanto, Rahmi Mulyasari** ----- 96-106  
 DOI : <http://dx.doi.org/10.32693/bomg.37.2.2022.788>
- Geological Interpretation Of 2d Gravity Modeling In Tulung Selapan Area And Surroundings, South Sumatra Basin*  
**Eddy Mirnanda, Vera Sarah Simatupang, Harkins Prabowo** ----- 107-119  
 DOI : <http://dx.doi.org/10.32693/bomg.37.2.2022.796>