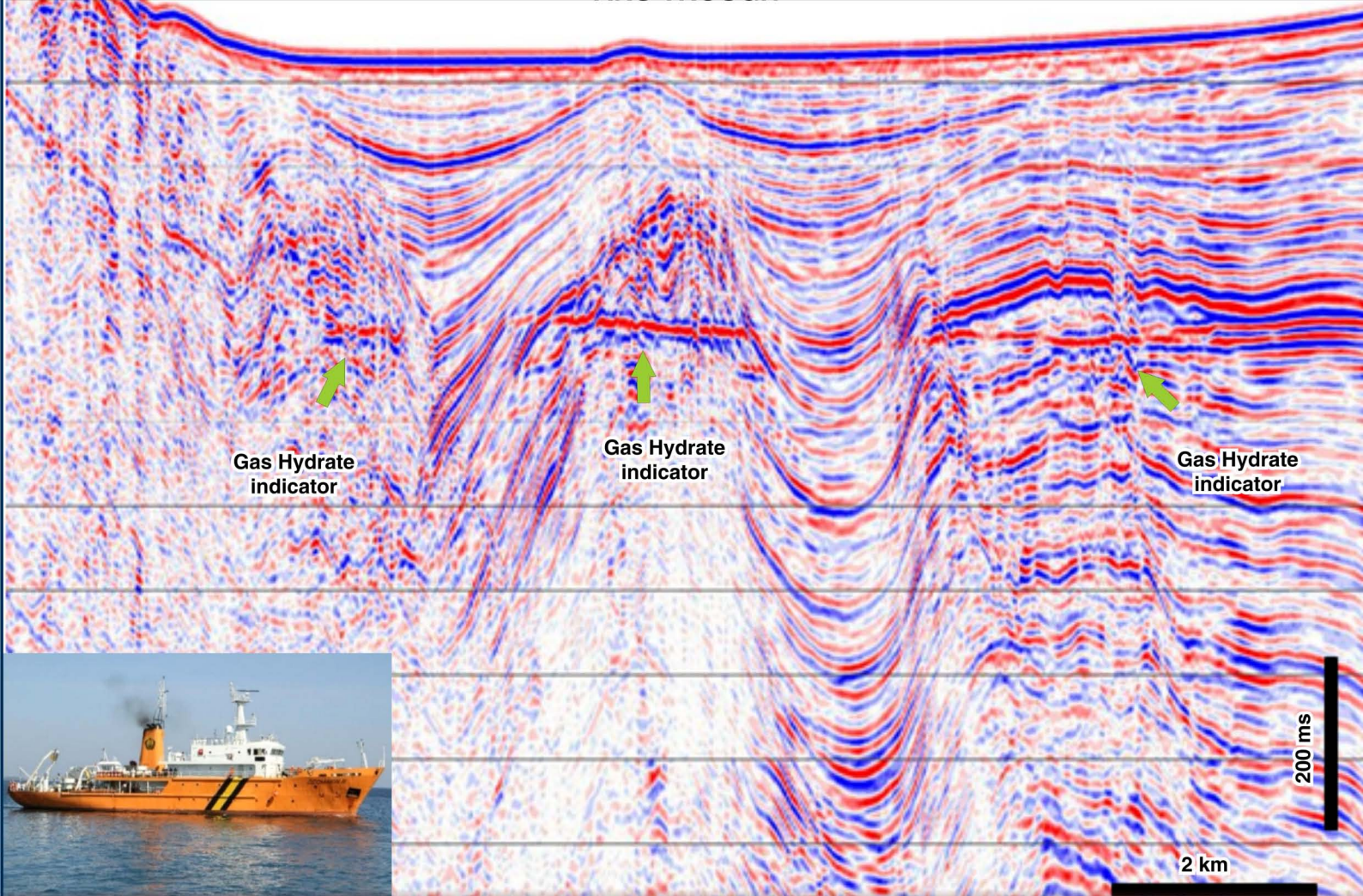


# BULLETIN OF THE MARINE GEOLOGY

VOLUME 33 • NUMBER 1 • JUNE 2018

## ARU TROUGH



BULL. MGI

VOL. 33

NO. 1

PAGE 1 - 70

BANDUNG, JUNE 2018

ISSN 1410-6175

Accredited : RISTEKDIKTI No. 21/E/KPT/2018



**MARINE GEOLOGICAL INSTITUTE**  
RESEARCH AND DEVELOPMENT AGENCIES FOR ENERGY AND MINERAL RESOURCES  
MINISTRY OF ENERGY AND MINERAL RESOURCES

**PUSAT PENELITIAN DAN PENGEMBANGAN GEOLOGI KELAUTAN**  
BADAN PENELITIAN DAN PENGEMBANGAN ENERGI DAN SUMBERDAYA MINERAL  
KEMENTERIAN ENERGI DAN SUMBERDAYA MINERAL

# BULLETIN OF THE MARINE GEOLOGY

---

Vol. 33, No. 1, June 2018

---

## INSURED EDITOR

Director of Marine Geological Institute

## VICE CHIEF OF INSURED EDITOR

Head of Afiliation and Information Division

## CHIEF OF EDITORIAL BOARD

Ir. Yudi Darlan, M.Sc.

## VICE CHIEF OF EDITORIAL BOARD

Dr. Noor Cahyo Dwi Aryanto

## EDITORIAL BOARDS

Dr. Susilohadi (*Marine Geological Insitute of Indonesia*)  
Dr. Hananto Kurnio (*Marine Geological Insitute of Indonesia*)  
Dr. Rina Zuraida (*Marine Geological Insitute of Indonesia*)  
Dr. Luli Gustiantini (*Marine Geological Insitute of Indonesia*)  
Imam Setiadi, S.Si., M.T. (*Marine Geological Insitute of Indonesia*)  
Dr. Eng. Agus Didit Haryanto (*Padjadjaran University*)  
Dr. Dicky Muslim (*Padjadjaran University*)  
Dr. Chalid Idham Abdullah (*Institute Of Technology Bandung*)

## SCIENTIFIC REVIEWERS

Dr. Tri Prartono (*Bogor Agricultural University*)  
Dr. Haryadi Permana (*Research Center For Geotechnology*)  
Dra. Kresna Tri Dewi, M.Sc. (*Geological Agency of Indonesia*)  
Kris Budiono, M.Sc. (*Indonesian Geologist Association*)  
Ir. Herman Darman, M.Sc. (*PT. Eksindo Pratama*)  
Ir. Ipranta, M.Sc. (*Marine Geological Insitute of Indonesia*)

## PUBLISHER BOARDS

Drs. Judy Muliawan Eddy (*Chief*)  
Pungky Sampurno, S.T.  
Bakti Natakusumah, S.Si.

## GRAPHIC DESIGN

Sutisna  
Sumiyati

For communication of this publications, please contact :

MARINE GEOLOGICAL INSTITUTE

Dr. Junjuran 236, Bandung-40174, Indonesia

Telephone : +62-22-6032020, 6032201, Fax : +62-22- 6017887

E-mail : sekretariat-bomg@mgi.esdm.go.id

Cover Figure : Cross Section Seismic of Aru Trough (courtesy of Tommy Naibaho)  
insert photo of RV Geomarine III of MGI (courtesy of Sahnedi)

## PREFACE

When it was founded, Bulletin of the Marine Geology (BoMG) was intended to disseminate the results of marine geology and geophysics researches that were conducted by Marine Geological Institute of Indonesia (MGI). Following the addition of marine renewable energy as a research program in MGI, BoMG also expands the scope, areas and researches that are published by the Bulletin. This result of this expansion is wider scope of themes related to marine geoscience and its application that are conducted by researchers outside of MGI, either from Indonesia or abroad.

The first edition of year 2018 shows the scope change with the first paper that discuss *Structural Complexity in the Boundary of Forearc Basin – Accretionary Wedge in the Northwesternmost Sunda Active Margin* is based on research conducted by Research Center for Geotechnology - LIPI. The second paper discuss *Characteristics of Boleng Strait Sediments, East Nusa Tenggara, and its Relationship with Current Velocity* that is written by MGI researcher. The third paper, *Vertical Distribution of Heavy Metals in Coastal Sediment: A Record of the Changing Input in the Estuarine of the Semarang Flood Canal* is written by scientist from Research Center for Oceanography - LIPI. The fourth paper offers an *Oblique Intraplate Convergence of the Seram Trough, Indonesia* is a result of collaboration between scientists from Research Center for Geotechnology - LIPI and Royal Holloway, University of London. The last paper, *Zonation of Marine Geological Environment of Wangi-wangi Island Waters and Adjacent Area Wakatobi Districts Southeast Celebes Province*, is presented by scientist from MGI and University of Padjadjaran using data from coastal geological survey conducted by MGI.

The editors appreciate the valuable contribution of the authors for this edition.

Chief Editor

# BULLETIN OF THE MARINE GEOLOGY

---

Vol. 33, No. 1, June 2018

---

## CONTENTS

<i>Structural Complexity in the Boundary of Forearc Basin – Accretionary Wedge in the Northwesternmost Sunda Active Margin</i> <b>Maruf M. Mukti .....</b>	1-14
<i>Characteristics of Boleng Strait Sediments, East Nusa Tenggara, and its Relationship with Current Velocity</i> <b>Hananto Kurnio, Ai Yuningsih and Rina Zuraida.....</b>	15-27
<i>Vertical Distribution of Heavy Metals in Coastal Sediment: A Record of the Changing Input in the Estuarine of the Semarang Flood Canal</i> <b>Fitri Budiyanto, Lestari, Ricky Rositasari and Rachma Puspitasari.....</b>	29-40
<i>Oblique Intraplate Convergence of the Seram Trough, Indonesia</i> <b>Adi Patria and Robert Hall .....</b>	41-57
<i>Zonation of Marine Geological Environment of Wangi-wangi Island Waters and Adjacent Area Wakatobi Districts Southeast Celebes Province</i> <b>Agus Didit Haryanto, Yudi Darlan, Vijaya Isnaniawardhani, and Nisa Nurullmi .....</b>	59-70