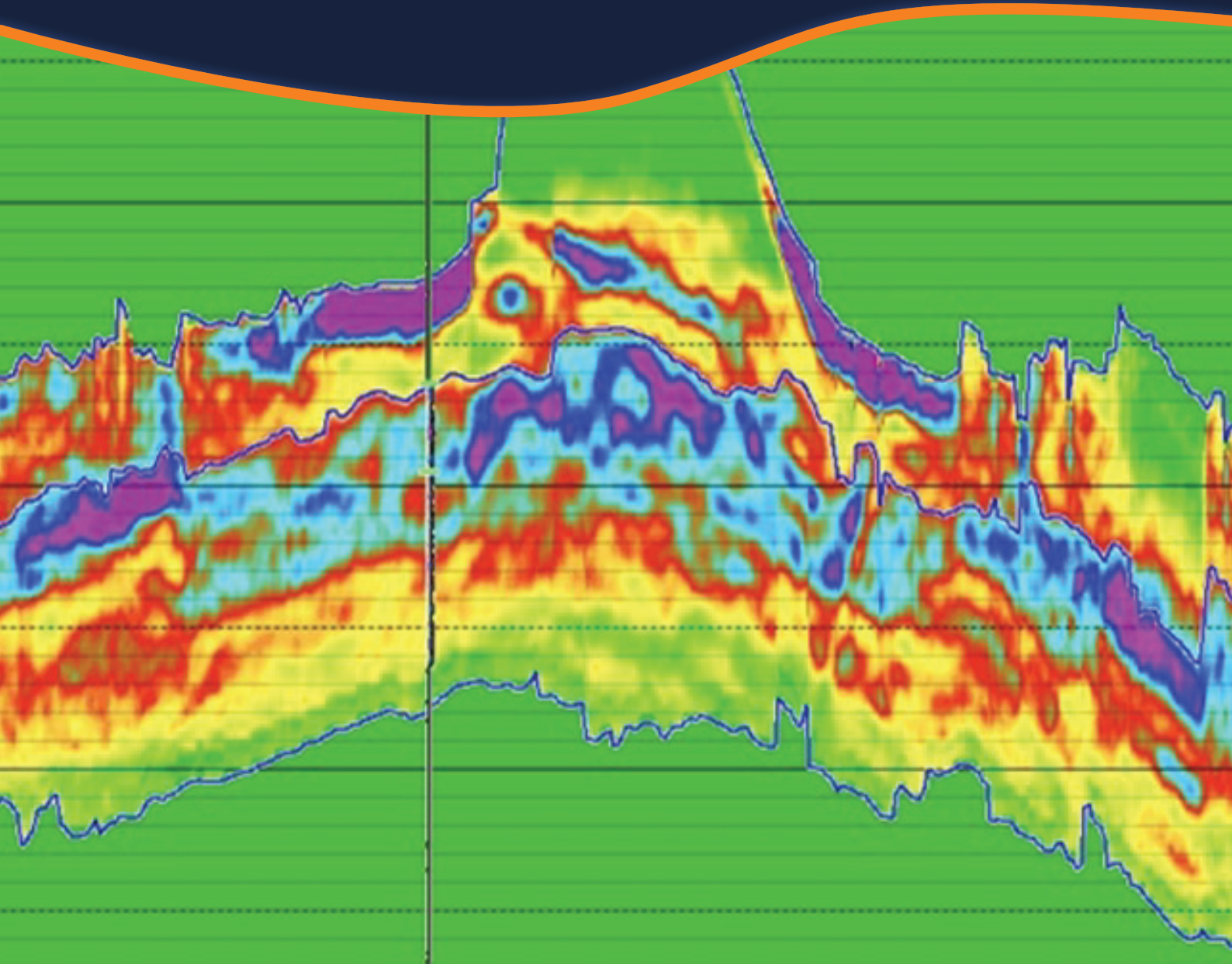


BULLETIN OF THE MARINE GEOLOGY

VOLUME 39 • NUMBER 2 • DEC. 2024



BoMG

VOL. 39

NO. 2

P. 69-132

BANDUNG, DEC. 2024

ISSN 1410-6175

Accredited : RISTEK-BRIN 200/M/KPT/2020



MARINE GEOLOGICAL INSTITUTE
GEOLOGICAL AGENCY
MINISTRY OF ENERGY AND MINERAL RESOURCES

BALAI BESAR SURVEI DAN PEMETAAN GEOLOGI KELAUTAN
BADAN GEOLOGI
KEMENTERIAN ENERGI DAN SUMBER DAYA MINERAL

BULLETIN OF THE MARINE GEOLOGY

Vol. 39, No. 2, December 2024

INSURED EDITOR

Director of Marine Geological Institute

CHIEF OF EDITORIAL BOARD

Imam Setiadi, S.Si., M.T.

VICE CHIEF OF EDITORIAL BOARD

Dra. Ai Yuningsih

EDITORIAL BOARDS

Dr. Luli Gustiantini, S.T., M.T. (Marine Geological Institute of Indonesia)
Siti Marina, S.T., M.Phil. (Marine Geological Institute of Indonesia)
Yulinar Firdaus, S.Si., M.T. (Marine Geological Institute of Indonesia)
Andrian Wilyan Djaja, S.Si., M.T. (Marine Geological Institute of Indonesia)
Sony Mawardi, S.T. (Marine Geological Institute of Indonesia)
Nazar Nurdin, S.T., M.T. (Marine Geological Institute of Indonesia)
Shaska Ramadhan Zulivandama, S.T., M.T. (Marine Geological Institute of Indonesia)
Muhammad Zulfikar, S.T., M.T. (Marine Geological Institute of Indonesia)
Irwan Hidayat Suherman, S.Si. (Marine Geological Institute of Indonesia)
Fauzi Budi Prasetyo, S.T., M.T. (Marine Geological Institute of Indonesia)
Dr. Ir. Noor Cahyo Dwi Aryanto, M.T. (National Research and Innovation Agency)
Dr. Eng. Budi Muljana, S.T., M.T. (Padjajaran University)

SCIENTIFIC REVIEWERS

Ir. Dida Kusnida, M.Sc. (National Research and Innovation Agency)
Dr. Pi. Iis Triyulianti, M.Si. (National Research and Innovation Agency)
Dra. Kresna Tri Dewi, M.Sc. (Centre for Geological Survey)
Dr. Ryan Dwi Wahyu Ardi (Soedirman University)
Dr. Marfasran Hendrizan, S.T., M.T. (National Research and Innovation Agency)

PUBLISHER BOARDS

Edi Suhanto, S.Si., M.T.
Bakti Nata Kusumah, S.Si.
Drs. Judy Muliawan Eddy
Ramawarist Ramzani, S.H.
Nanang Suryana
Dwinanda Pratya Annisa M., S.pd.
Widya Anindita, S.Kom.

GRAPHIC DESIGN

Dery Rochiman, A.Md.

For communication of this publications, please contact :
MARINE GEOLOGICAL INSTITUTE
Dr. Junjuran 236, Bandung-40174, Indonesia
Telephone : +62-22-6032020, 6032201, Fax : +62-22- 6017887
E-mail : ejournal.p3gl@gmail.com

Preface

We are delighted to present the latest edition of the Bulletin of the Marine Geology for 2024. This issue dedicated to advancing our understanding of marine geological processes and their impacts on Earth's systems. It brings together a series of groundbreaking studies that shed light on various aspects of marine geology, ranging from basin-scale structural modeling to microfossil-based paleoenvironmental reconstructions. The contributions presented here highlight the depth and vary of research in this field.

The first paper present gravity modeling and seismic inversion techniques to elucidate the subsurface structure and hydrocarbon potential of the Nias Basin, providing critical insights for resource exploration.

The zooplankton distribution from backscatter data of ADCP instrument in West Sumatra Waters is the topic of the second article of this edition. This study maps the vertical distribution of zooplankton of this area. It offers a novel approach to understanding biological dynamics in marine ecosystems.

The next author contributes Miocene reconstruction paleogeography of East Kalimantan, employing microfossil data to interpret depositional environments and tectonic evolution. The fourth article presents the increase in Sea Surface Temperature (SST) and Sea Surface Salinity (SSS) gradients during the ~20 ka BP. It likely indicates a weakened intensity of the surface ITF relative to conditions during the Late Holocene.

The last article presents paleoenvironmental history of the Kutai Basin, revealing shifts in climate and depositional settings over millions of years.

We extend our sincere gratitude to the authors for their valuable contributions to this issue of the Bulletin of the Marine Geology. We also thank the reviewers for their insightful comments, which have significantly enhanced the quality of this journal.

We hope that this collection of studies will inspire future research and contribute to the broader scientific community. We remain committed to publishing higher-quality research in marine geology and look forward to your continued support.

Bandung, December 2024
Sincerely,

Editorial Board

BULLETIN OF THE MARINE GEOLOGY

Vol. 39, No. 2, December 2024

Contents

- GRAVITY MODELING OF SUBSURFACE STRUCTURES AND RESERVOIR CHARACTERIZATION USING SEISMIC INVERSION IN THE NIAS BASIN**
Ramadhana Wibowo, Imam Setiadi, Yulinar Firdaus, Riza Rahardiawan ----- 69-84
DOI : 10.32693/bomg.39.2.2024.890
- ZOOPLANKTON DISTRIBUTION FROM BACKSCATTER DATA OF ADCP INSTRUMENT IN WEST SUMATRA WATERS**
Gandhi Napitupulu, Rizqi Ayu Farihah, Henry Munandar Manik, Oktavira Dwi Demia Larasati, Moses Napitupulu, Lamona Irmudyawati Bernawis, Ivonne Milichristi Radjawane, Edi Kusmanto----- 85-96
DOI : 10.32693/bomg.39.2.2024.871
- ENVIRONMENTAL CHANGES DURING THE LATE MIOCENE TO PLEISTOCENE USING SMALL FORAMINIFERA AND PALYNOMORPHS IN THE KUTAI BASIN, EAST KALIMANTAN**
Firda Aulya Nisa, Lia Jurnaliah, Winantris, Kuntadi Nugrahanto----- 97-110
DOI : 10.32693/bomg.39.2.2024.855
- VARIABILITY OF SEA SURFACE TEMPERATURE AND SALINITY IN MAKASSAR STRAIT DURING THE LAST GLACIAL MAXIMUM**
Oktavira Dwi Demia Larasati, Marfasran Hendrizan, Rima Rachmayani, Gandhi Napitupulu ----- 111-121
DOI : 10.32693/bomg.39.2.2024.882
- MIOCENE PALEO GEOGRAPHIC RECONSTRUCTION IN THE SANGATTA AREA, EAST KALIMANTAN BASED ON CALCAREOUS NANNOFOSSIL BIOSTRATIGRAPHY AND BENTHONIC FORAMINIFERAL ANALYSIS**
Mohammad Ali Jambak, Deny, Rendy, Dewi Syavitri ----- 122-132
DOI : 10.32693/bomg.39.2.2024.869