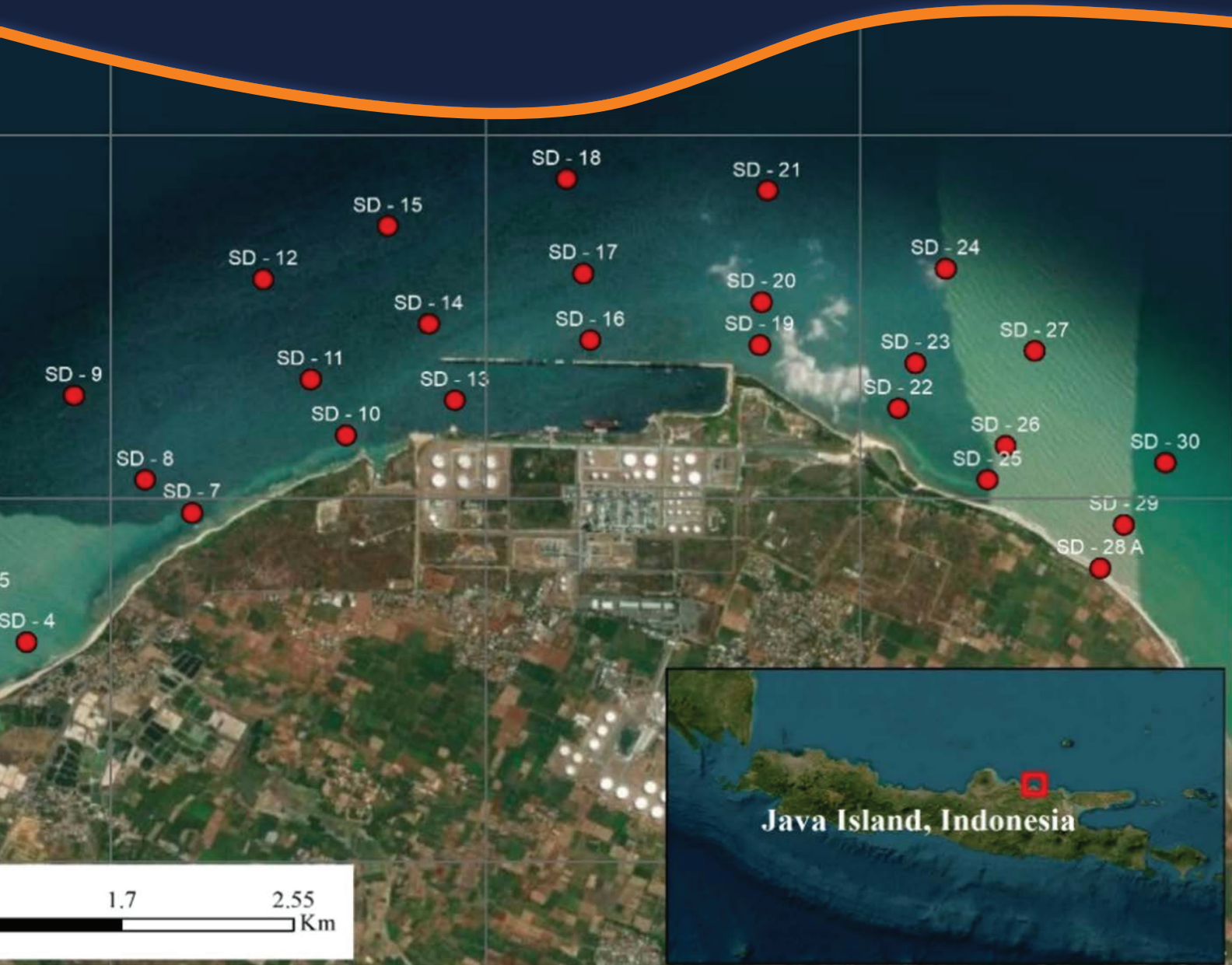


# BULLETIN OF THE MARINE GEOLOGY

VOLUME 39 • NUMBER 1 • JUNE 2024



BoMG

VOL. 39

NO. 1

PAGE 1-68

BANDUNG, JUNE 2024

ISSN 1410-6175

Accredited : RISTEK-BRIN 200/M/KPT/2020



**MARINE GEOLOGICAL INSTITUTE**  
GEOLOGICAL AGENCY  
MINISTRY OF ENERGY AND MINERAL RESOURCES

**BALAI BESAR SURVEI DAN PEMETAAN GEOLOGI KELAUTAN**  
BADAN GEOLOGI  
KEMENTERIAN ENERGI DAN SUMBER DAYA MINERAL

# BULLETIN OF THE MARINE GEOLOGY

Vol. 39, No. 1, June 2024

## INSURED EDITOR

Director of Marine Geological Institute

## CHIEF OF EDITORIAL BOARD

Imam Setiadi, S.Si., M.T.

## VICE CHIEF OF EDITORIAL BOARD

Dra. Ai Yuningsih

## EDITORIAL BOARDS

Dr. Luli Gustiantini, S.T., M.T. (Marine Geological Institute of Indonesia)  
Siti Marina, S.T., M.Phil. (Marine Geological Institute of Indonesia)  
Yulinar Firdaus, S.Si., M.T. (Marine Geological Institute of Indonesia)  
Andrian Wilyan Djaja, S.Si., M.T. (Marine Geological Institute of Indonesia)  
Sony Mawardi, S.T. (Marine Geological Institute of Indonesia)  
Nazar Nurdin, S.T., M.T. (Marine Geological Institute of Indonesia)  
Shaska Ramadhan Zulivandama, S.T., M.T. (Marine Geological Institute of Indonesia)  
Muhammad Zulfikar, S.T., M.T. (Marine Geological Institute of Indonesia)  
Irwan Hidayat Suherman, S.Si. (Marine Geological Institute of Indonesia)  
Fauzi Budi Prasetyo, S.T., M.T. (Marine Geological Institute of Indonesia)  
Dr. Ir. Noor Cahyo Dwi Aryanto, M.T. (National Research and Innovation Agency)  
Dr. Eng. Budi Muljana, S.T., M.T. (Padjajaran University)

## SCIENTIFIC REVIEWERS

Dr. Ir. Tri Prartono, M.Sc. (Bogor Agricultural Institute)  
Dr. Agus Setiawan (National Research and Innovation Agency)  
Dr. Ir. Dicky Muslim, M.Sc., Ph.D. (Padjajaran University)  
Idha Yulia Ikhsani, M.Sc., Ph.D. (National Research and Innovation Agency)  
Dr. rer. nat. Rima Rachmayani (Bandung Institute of Technology)

## PUBLISHER BOARDS

Edi Suhanto, S.Si., M.T.  
Bakti Nata Kusumah, S.Si.  
Drs. Judy Muliawan Eddy  
Ramawarist Ramzani, S.H.  
Nanang Suryana  
Dwinanda Pratya Annisa M., S.pd.  
Widya Anindita, S.Kom.

## GRAPHIC DESIGN

Dery Rochiman, A.Md.

For communication of this publications, please contact :  
**MARINE GEOLOGICAL INSTITUTE**  
Dr. Junjuran 236, Bandung-40174, Indonesia  
Telephone : +62-22-6032020, 6032201, Fax : +62-22- 6017887  
E-mail : [ejournal.p3gl@gmail.com](mailto:ejournal.p3gl@gmail.com)

## Preface

This year marks the deadline for re-accrediting the Bulletin of the Marine Geology. The publication of its first edition in 2024 is a key component of the re-accreditation process with the Ministry of Education, Culture, Research, and Technology. The Marine Geological Institute credits its editorial board, general division, and legal cooperation and information sub-division for their collaboration in completing the inaugural edition.

Featuring five articles from different scientific disciplines, all written by field experts, the Editorial Board extends its gratitude to all who contributed to the submission and review of papers. The papers tell us an impact of environmental factors on coastal ecosystems, with each topic addresses different aspects of how pollutants, ocean energy, sediment dynamics, heavy metals, and tidal patterns can affect the health and resilience of coastal environments.

The first paper highlights the potential risks of PAH pollutants released into the Indramayu Coast from anthropogenic activities, emphasizing the need for further awareness and periodic monitoring to detect carcinogenic PAHs. The second paper explores the seasonal and intra-seasonal variability of ocean thermal energy as a clean energy alternative, with fluctuations ranging between 280.09 GW and 295.65 GW, demonstrating its potential as a renewable energy resource. The third paper emphasizes the importance of understanding sediment dynamics to support the revitalization of ports and ensure the sustainability of port operations through effective solutions. The fourth paper reveals the increased pollution in coral reef environments due to heavy metal lead (Pb) content from rapid industrial development and ship traffic, with surface water Pb concentrations exceeding threshold levels and posing potential harm to the coral reef ecosystem. The last article discusses Tidal Harmonic Analysis and Prediction to support Early Warning for Coastal Flooding, highlighting the importance of accurate tide predictions in providing early warning, mitigation, and adaptation to frequent coastal flooding in at-risk coastal areas.

By submitting research findings to be published in this periodical, you, as top-tier scientists, will help us in our endeavours to make the Bulletin of Marine Geology reputable, prestigious, and respectable. Enjoy reading this edition.

Bandung, June 2024  
Warm regards,

Editorial Board

**BULLETIN OF THE MARINE GEOLOGY**

---

Vol. 39, No. 1, June 2024

---

**Contents**

- POLYCYCLIC AROMATIC HYDROCARBONS (PAHs) IN INDRAMAYU COASTAL, WEST JAVA: DISTRIBUTION, SOURCE, AND ECOLOGICAL RISK ASSESSMENT**  
**Deny Yogaswara, Dede Falahudin, Ita Wulandari, Edward Edward, Ricky Rositasari, Ukis Shofarudin** ----- **1-14**  
DOI : <http://dx.doi.org/10.32693/bomg.39.1.2024.850>
- SEASONAL AND INTRA-SEASONAL VARIABILITY OF OCEAN THERMAL POTENTIAL ENERGY IN THE INDONESIAN EXCLUSIVE ECONOMIC ZONE**  
**Totok Suprijo, Gandhi Napitupulu, Nining Sari Ningsih, Denny Basardo Jonatan Sinaga, Audi Rachman** ----- **15-27**  
DOI : <http://dx.doi.org/10.32693/bomg.39.1.2024.866>
- SEDIMENT CHARACTERISTICS TO SUPPORT THE REVITALIZATION OF TPPI TUBAN PORT, EAST JAVA, INDONESIA**  
**Reno Arief Rachman, Mardi Wibowo, Aloysius Bagyo Widagdo, Nurkhalis Rahili, Rizaldi Caesar Yuniardi, Hamzah Haru Radityo Suharyanto, Affandy Hamid, Aris Subarkah, Suranto Suranto, Hanah Khoirunnisa** ----- **28-41**  
DOI : <http://dx.doi.org/10.32693/bomg.39.1.2024.874>
- STUDY OF HEAVY METAL LEAD (PB) CONTENT IN THE CORAL REEF ENVIRONMENT OF PANJANG ISLAND, BANTEN**  
**Ahmad Al Fauzan, Dwi Amanda Utami, Rima Rachmayani, Ayu Utami Nurhidayati** ----- **42-58**  
DOI : <http://dx.doi.org/10.32693/bomg.39.1.2024.862>
- TIDAL HARMONIC ANALYSIS AND PREDICTION TO SUPPORT EARLY WARNING FOR COASTAL FLOODING**  
**Randi Firdaus, Nurul Tazaroh, Oky Surendra, Eko Prasetyo, Riris Adriyanto** ----- **59-68**  
DOI : <http://dx.doi.org/10.32693/bomg.39.1.2024.863>