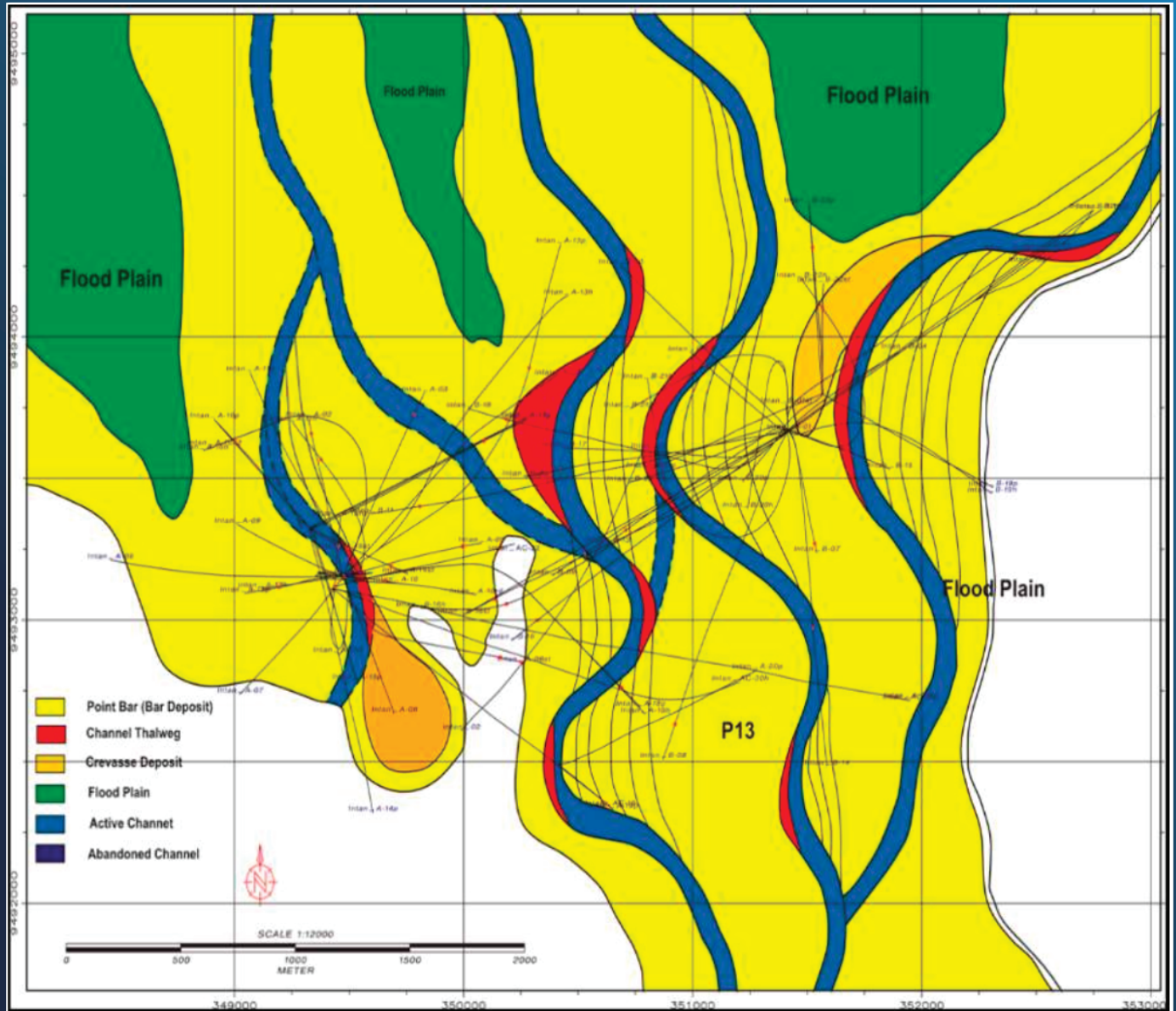




# Bulletin of The Marine Geology

Volume 36, No. 2, December 2021

ISSN : 1410 - 6175



*Sand facies interpretation of TAF reservoir*

**MARINE GEOLOGICAL INSTITUTE  
RESEARCH AND DEVELOPMENT AGENCIES FOR ENERGY AND MINERAL RESOURCES  
MINISTRY OF ENERGY AND MINERAL RESOURCES**

**PUSAT PENELITIAN DAN PENGEMBANGAN GEOLOGI KELAUTAN  
BADAN PENELITIAN DAN PENGEMBANGAN ENERGI DAN SUMBER DAYA MINERAL  
KEMENTERIAN ENERGI DAN SUMBER DAYA MINERAL**

Bull. of The Marine  
Geology

VOL. 36

NO. 2

Page 57 - 107

BANDUNG  
Dec 2021

ISSN  
1410- 6175