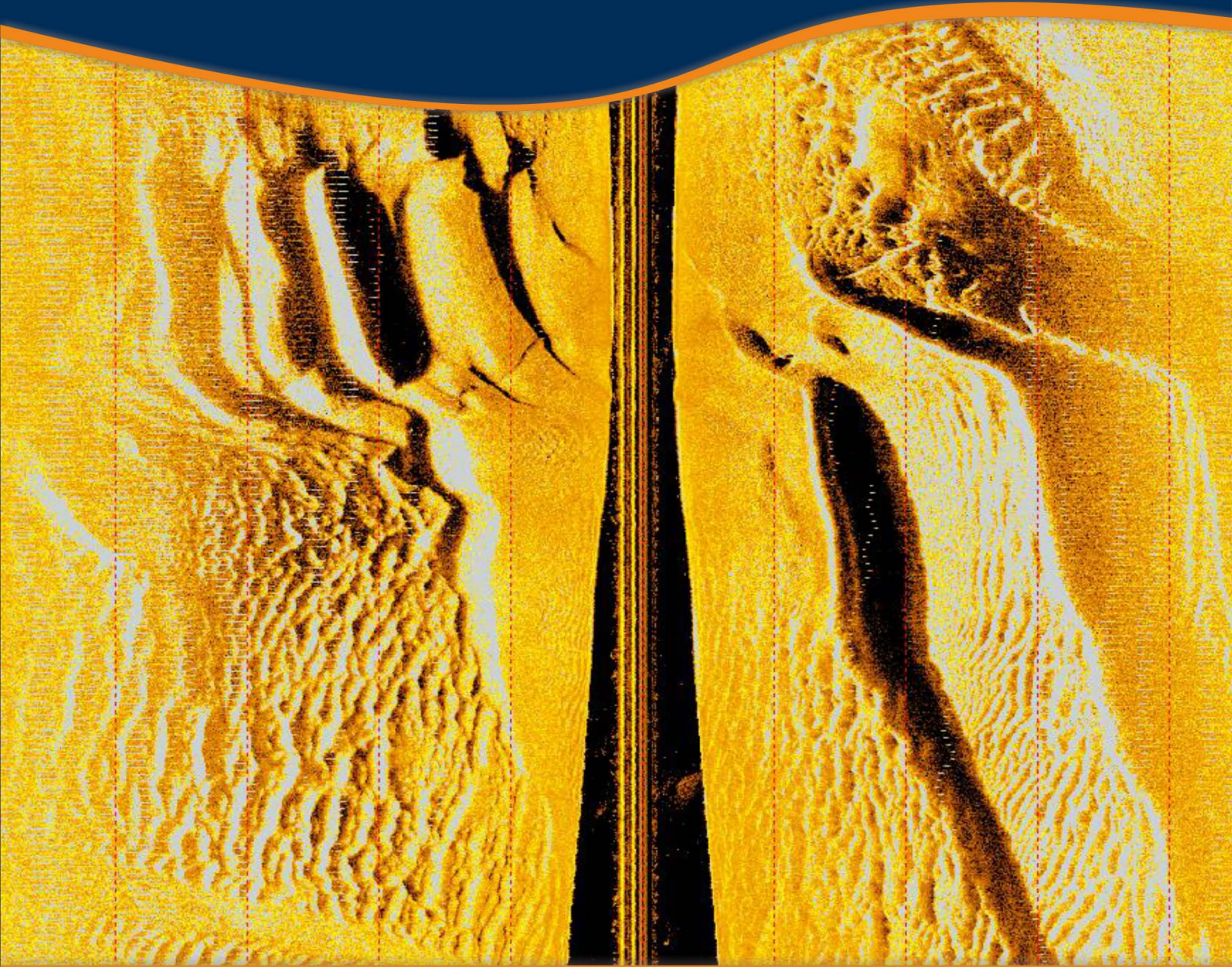


BULLETIN OF THE MARINE GEOLOGY

VOLUME 34 • NUMBER 1 • JUNE 2019



BULL. MGI

VOL. 34

NO. 1

PAGE 1 - 62

BANDUNG, JUNE 2019

ISSN 1410-6175

Accredited : RISTEKDIKTI No. 21/E/KPT/2018



MARINE GEOLOGICAL INSTITUTE
RESEARCH AND DEVELOPMENT AGENCIES FOR ENERGY AND MINERAL RESOURCES
MINISTRY OF ENERGY AND MINERAL RESOURCES

PUSAT PENELITIAN DAN PENGEMBANGAN GEOLOGI KELAUTAN
BADAN PENELITIAN DAN PENGEMBANGAN ENERGI DAN SUMBER DAYA MINERAL
KEMENTERIAN ENERGI DAN SUMBER DAYA MINERAL

BULLETIN OF THE MARINE GEOLOGY

Vol. 34, No. 1, June 2019

INSURED EDITOR

Director of Marine Geological Institute

VICE CHIEF OF INSURED EDITOR

Head of Affiliation and Information Division

CHIEF OF EDITORIAL BOARD

Dr. Ir. Hananto Kurnio, M.Sc.

VICE CHIEF OF EDITORIAL BOARD

Dr. Luli Gustiantini, S.T., M.T.

EDITORIAL BOARDS

- Dr. Ir. Susilohadi (*Marine Geological Insitute of Indonesia*)
Dr. Ir. Noor Cahyo Dwi Aryanto, M.T. (*Marine Geological Insitute of Indonesia*)
Ir. Ipranta, M.Sc. (*Marine Geological Insitute of Indonesia*)
Ir. Immaculata Christiana, MT. (*Marine Geological Insitute of Indonesia*)
Imam Setiadi, S.Si., M.T. (*Marine Geological Insitute of Indonesia*)
Tumpal Bernhard Nainggolan, ST., MT. (*Marine Geological Insitute of Indonesia*)
Nazar Nurdin, ST., MT. (*Marine Geological Insitute of Indonesia*)
R. Dwi Susanto, PhD. (*Department of Atmospheric and Oceanic Science University of Maryland, United States*)
Dr. Tri Prartono (*Bogor Agricultural University*)
Susana Bolhao Muinos (*Universidade de Lisboa, Portugal*)

SCIENTIFIC REVIEWERS

- Prof. Dr. Sismanto (*Gadjah Mada University*)
Dr. Fatkhan (*Institute of Technology Bandung*)
Dr. Sigid Haryadi (*Bogor Agricultural University*)
Prof. Henry M. Manik (*Bogor Agricultural University*)
Dr. Hermes Panggabean, M.Sc. (*IAGI-Indonesian Association of Geologists*)

PUBLISHER BOARDS

- Drs. Judy Muliawan Eddy (*Chief*)
Swasty Aninda Piranti, ST.
Bakti Natakusumah, S.Si.

GRAPHIC DESIGN

- Sutisna
Sumiyati

For communication of this publications, please contact :
MARINE GEOLOGICAL INSTITUTE
Dr. Junjuran 236, Bandung-40174, Indonesia
Telephone : +62-22-6032020, 6032201, Fax : +62-22- 6017887
E-mail : ejournal.p3gl@gmail.com

PREFACE

At the beginning, Bulletin of Marine Geology (BoMG) was meant to publicize Marine Geological Institute of Indonesia (MGI) research results. Nowadays, due to addition of marine renewable energy and many contributions by external authors either from Indonesia or abroad; BoMG expands the scope, areas and researches published by the Bulletin. The expansion accommodates wider scope themes related to marine geoscience and its application.

The 2019's year first edition presents the first paper *Delineation of Sedimentary Subbasin and Subsurface Interpretation East Java Basin in the Madura Strait and Surrounding Area Based on Gravity Data Analysis* research conducted by collaboration between MGI and Center for Geological Survey. The second paper *Combined Multiple Attenuation Methods and Geological Interpretation : Seram Sea Case Study 2D Marine Seismic Data* research by University of Jambi and MGI. The third paper *A First Record of Metal Fractionation in Coastal Sediment from Ambon Bay, Moluccas, Indonesia* by Research Center for Oceanography and Research Center for Deep Sea, Indonesian Institute for Sciences (LIPI). The fourth paper *Seabed Characterization through Image Processing of Side Scan Sonar Case Study: Bontang and Batam* by MGI. And the fifth paper *Reservoir Characterization Using Acoustic Impedance Inversion and Multi-Attribute Analysis in Nias Waters, North Sumatra* collaboration between Agriculture Institute Bogor and MGI. The editors appreciate the valuable contribution of the authors for this edition.

Chief Editor

BULLETIN OF THE MARINE GEOLOGY

Vol. 34, No. 1, June 2019

CONTENTS

<i>Delineation of Sedimentary Subbasin and Subsurface Interpretation East Java Basin in the Madura Strait and Surrounding Area Based on Gravity Data Analysis</i> Imam Setiadi, Budi Setyanta, Tumpal Bernhard Nainggolan and Joni Widodo	1-16
<i>Combined Multiple Attenuation Methods and Geological Interpretation : Seram Sea Case Study 2D Marine Seismic Data</i> Tumpal Bernhard Nainggolan, Said Muhammad Rasidin and Imam Setiadi	17-28
<i>A First Record of Metal Fractionation in Coastal Sediment from Ambon Bay, Moluccas, Indonesia</i> Lestari, Fitri Budiyanto and Corry Yanti Manullang.....	29-36
<i>Seabed Characterization through Image Processing of Side Scan Sonar Case Study: Bontang and Batam</i> Subarsyah and Lukman Arifin	37-50
<i>Reservoir Characterization Using Acoustic Impedance Inversion and Multi-Attribute Analysis in Nias Waters, North Sumatra</i> Fathkhurozak Yunanda Rifai, Tumpal Bernhard Nainggolan and Henry Munandar Manik.....	51-62